



18 Old Blandford Road, Harnham

£599,950



## 18 Old Blandford Road, Harnham, Wiltshire SP2 8DQ

- Luxury Kitchen •Stunning Cathedral Views •Five Double Bedrooms
- Ensuite To Master Bedroom •Generous Gardens •Integral Garage •Off Road Parking
- No Onward Chain •EPC: C

### LOCATION

Harnham is located on the edge of Salisbury city, which has excellent schooling with Puddleducks School, Harnham Infant School and Harnham Junior School. There is also a selection of pubs and hotels to choose from. Harnham has several bus routes making it easy to get to all surrounding areas and is situated close to Salisbury Hospital and Salisbury city centre. The Cathedral city of Salisbury has a comprehensive choice of schools as well as excellent shopping and recreational facilities which include a theatre, cinema, arts centre, restaurants, pubs, clubs, supermarkets, dentists, doctors' surgeries, hairdressers, library, leisure centre and fitness gym. The city also has 5 Park & Ride services for ease of access into the city centre. Salisbury 1m, Fordingbridge 10m. Trains: Salisbury (London Waterloo 85 mins).

### DESCRIPTION

An exceptional five bedroom detached house located in a popular area of Harnham providing luxury accommodation and spectacular views of Salisbury Cathedral. Including an entrance hall, sitting room, open plan kitchen/dining room, cloakroom, utility, conservatory, five double bedrooms with ensuite to master, family bathroom, integral garage, private rear garden and off road parking. Sold with no onward chain.

### SERVICES

All mains services are connected.



### OUTSIDE

**Front** - The front of the house provides a private driveway with space for several vehicles as well as allowing access to the garage. A set of tiered steps lead to the front door and side pathways provide access to the rear of the house.

**Rear** - The rear of the house boasts a generous private garden that is mainly laid to lawn, bordered with colorful plants and shrubs as well as being enclosed to both sides with hedging and a block wall. A paved patio can be enjoyed and a fantastic view of the Harnham area and the Cathedral can be seen. At the end of the garden is a wood chipped play area that compliments this excellent family home.

### COUNCIL TAX BAND

Band G.

### TENURE

Freehold.

### VIEWINGS

Strictly by appointment only with Bassets.







## DIRECTIONS

Proceed out of Salisbury along Exeter Street and on reaching the roundabout continue over to New Bridge Road, on reaching the next roundabout bear round to the right into the Harnham Road. Continue for approximately 1/4 of a mile and turn left into Old Blandford Road, where the property can be found after a short distance on the right hand side.

## LOCAL INFORMATION

Schools - [www.education.gov.uk/schools/performance](http://www.education.gov.uk/schools/performance)

News and Events - [www.salisburyjournal.co.uk](http://www.salisburyjournal.co.uk) and [www.spirefm.co.uk](http://www.spirefm.co.uk)

## STAMP DUTY

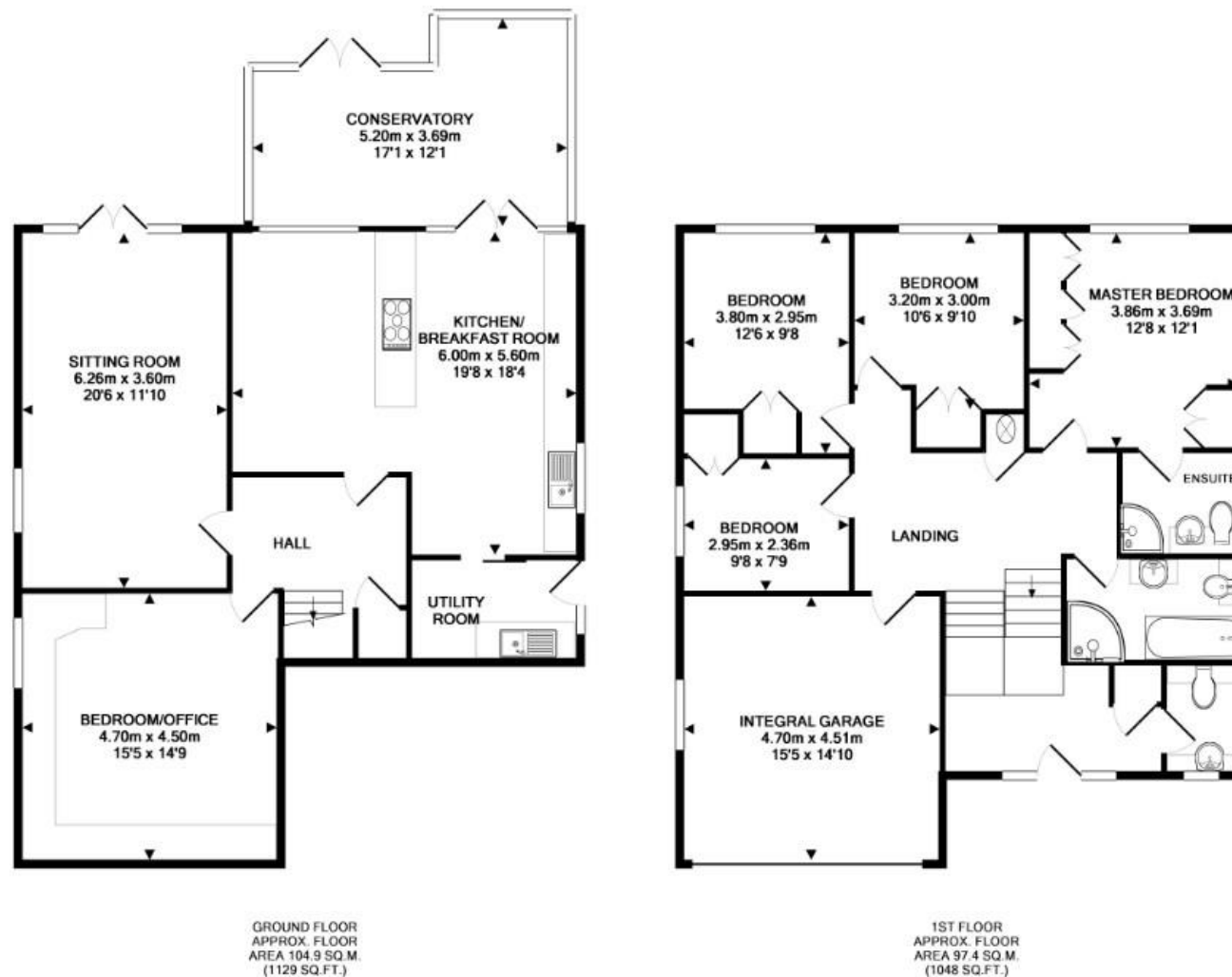
To calculate the stamp duty payable on this property visit <http://www.hmrc.gov.uk/tools/sdl/land-and-property.htm>

## FIXTURES & FITTINGS

This property is fitted with an array of elegant and luxury finishes throughout. The Kitchen/Dining room boasts a comprehensive range of quality units as well as built in appliances. The Sitting room is light and airy and benefits from patio doors that lead out to the private and spacious garden that provides a fantastic view of the Tennis Club and Salisbury Cathedral. In addition, the bathrooms are fitted with modern contemporary matching suites and all of the bedrooms are of a good size and are well presented. This superb house also benefits from an additional reception room that is currently being used by the current owners as a guest room / office that benefits from intelligent modern fitted fold away beds.







**Important Notice**  
These particulars do not constitute or form part of an offer or contract, nor may they be regarded as representations.  
All interested parties must themselves verify their accuracy. All measurements and the proportions of the floor plans provided are approximate.  
**05 March 2015**



Bassets Property Services Limited Registered in England No. 5040076  
41 Castle Street Salisbury Wiltshire SP1 3SP Tel 01722 415141  
Email [salisbury@bassets.co.uk](mailto:salisbury@bassets.co.uk)

